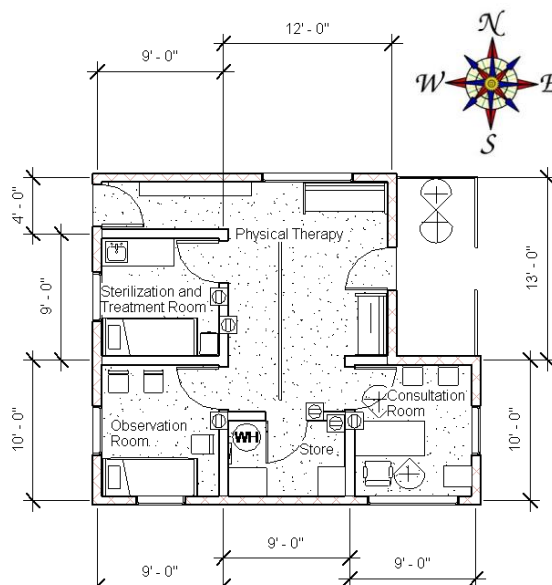




## Potential Credits

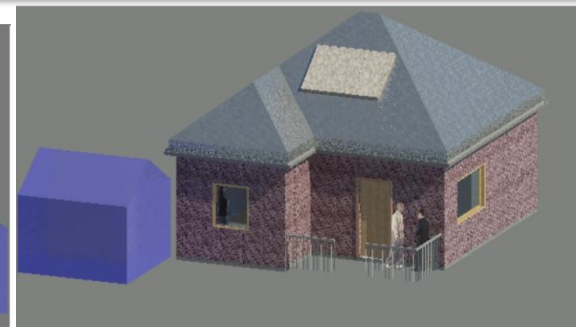
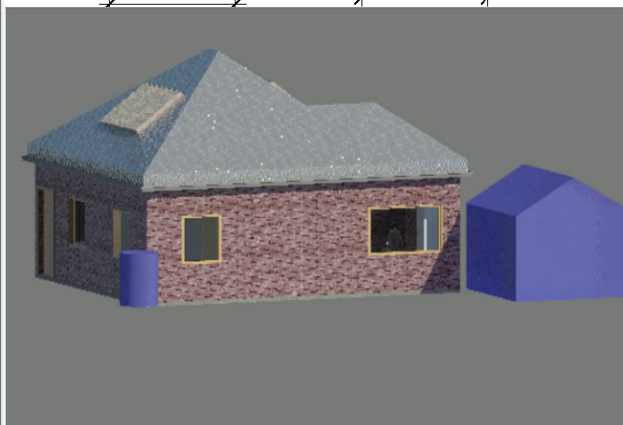
- LEED for Neighborhood Developed location
- Sensitive land protection
- Reduced parking footprint
- Construction activity pollution prevention
- Site assessment/development-protect or restore habitat
- Open space
- Rainwater management
- Light pollution reduction
- Fundamental commissioning and verification
- Minimal Energy performance/Building-level energy metering
- Fundamental refrigerant management
- Optimize energy performance
- Advanced energy metering
- Renewable energy production
- Enhanced refrigerant management
- Outdoor/indoor water use reduction
- Building-level water metering
- Storage and collection of recyclables
- Construction and demolition waste management planning
- Building life-cycle impact reduction
- Minimum indoor air quality performance
- Environmental tobacco smoke control
- Low-emitting materials
- Enhanced indoor air quality strategies
- Daylight/ interior lighting

## Sierra Leone Treatment Facility



## Key Notes

- North/South orientation
- Concrete flooring
- Mud-brick construction
- Insulated roofing
- Ceiling fans
- Physical therapy features
- Water collection system
- Solar and electrical panel
- Ebola check-station tent



By: Anthony Davala, Brian Brennan, Greyson McDonald